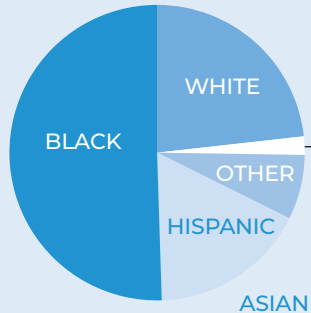


Early Childhood

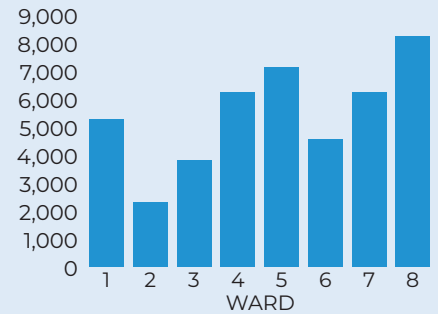
All young children in DC need access to quality early care and education programs to ensure they enter school healthy and ready to learn.

THERE ARE NEARLY 43,000 CHILDREN UNDER 5 IN DC

76% of DC children under 5 are children of color



Number of children under 5 by Ward:



THE EARLY YEARS ARE CRITICAL FOR A CHILD'S DEVELOPMENT

In the first few years of life, children's brains make more than **1 MILLION** neural connections per second

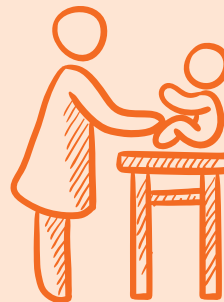


Quality early care and education programs provide rich and nurturing learning opportunities during this important time



EARLY CHILDHOOD EDUCATION IS NOT ACCESSIBLE TO ALL DC FAMILIES

Too many DC families struggle to afford child care, especially low and middle-income families



Child care costs DC families an average of: **\$23,000 PER YEAR**

SUPPORTING CHILDREN MEANS SUPPORTING THEIR CAREGIVERS

Early childhood educators earn an average of only: **\$14 PER HOUR**



Family support programs such as:

Adult Education Programs
Housing Supports
Workforce Development
Quality Improvement Network
Early Head Start/Head Start
Home Visiting
Medicaid
SNAP
WIC
TANF are vital for DC families

QUESTIONS FOR CANDIDATES

Early Childhood

All young children in DC need access to quality early care and education programs to ensure they enter school healthy and ready to learn.

1. Early childhood represents the most critical time for brain development. How can the District ensure more of our youngest residents have access to high-quality early care and education programs?
2. In the District, young children rely on many different resources—home visiting, early intervention, health care, mental health supports, nutrition programs, and early learning opportunities—to help them reach their full potential. Different agencies run these programs making it confusing and/or difficult for families to get what they need. How would you support agencies to improve coordination and efficiency?
3. The average cost of child care for children under the age of 3 in the District is more than \$23,000 per year, what many residents pay for college tuition. What solutions do you propose to make child care more accessible for low and middle-income families?
4. Early childhood educators play a critical role in the healthy development of young children; however, these educators make on average \$14/hour and receive very few benefits. What steps would you take to ensure these educators receive adequate compensation and professional supports?
5. Working parents with young children must juggle family and work responsibilities. Decisions about work-life balance are often challenging. How could the District incentivize the business community to support parents' child care and parenting responsibilities?